

ESO FACILITIES & THE PROPOSAL PROCESS



Tereza Jerabkova
Observing Programmes Office



● ● ●
ESO

Facilities

ELT, Chile (in construction, 2027)

La Silla Paranal Observatory, Chile

ALMA (ESO, AUI/NRAO, NAOJ)

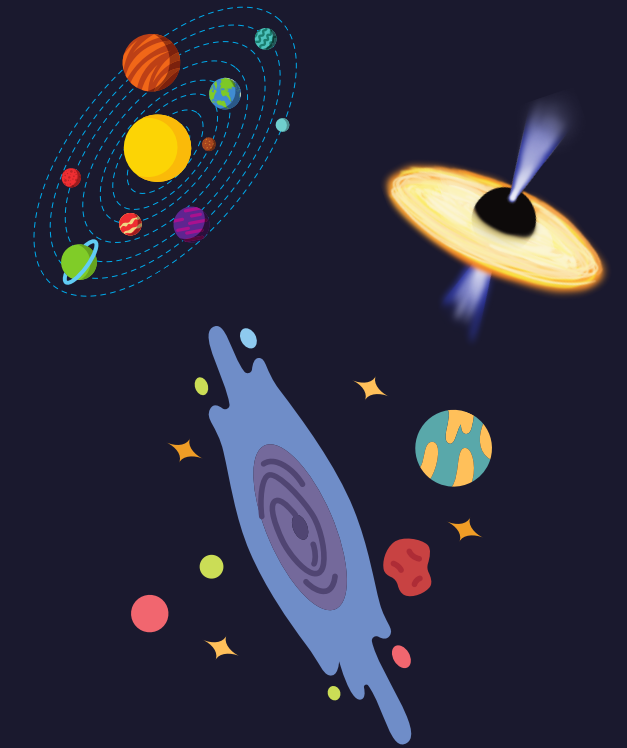
ESO Headquarters, Munich/Germany



Tereza Jerabkova from OPO



La Silla Paranal Observatory, Chile



La Silla



▶ 3.6m telescope (HARPS, NIRPS)

NEW

▶ The ESO New Technology Telescope – NTT
(SOFI, EFOSC2, visitor ULTRACAM)

Paranal



Four 8.2-m Unit Telescopes (UTs) and four 1.8m Auxiliary Telescopes (ATs)



UTs can work independently but also together!

- ▶ UT1 (FORS2, KMOS)
- ▶ UT2 (FLAMES, VISIR, UVES)
- ▶ UT3 (SPHERE, XSHOOTER, CRIRES)
- ▶ UT4 (HAWK-I, MUSE, ERIS)

NEW

Interferometry (UTs/ATs)

ESPRESSO

GRAVITY
MATISSE
PIONEER



Tereza Jerabkova from OPO



ALMA (Atacama Large Millimeter/submillimeter Array), Chile

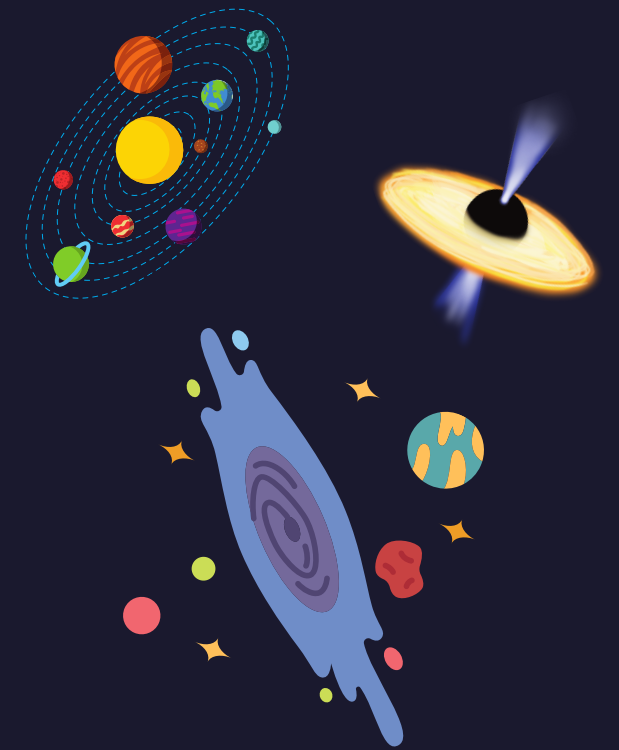
[Joint ALMA webpage](#)



The world's largest ground-based facility for observations in the millimeter/submillimeter regime located on the Chajnantor plateau, 5000 meters altitude in northern Chile

ALMA = ESO + the U.S. National Science Foundation (NSF) + the National Institutes of Natural Sciences (NINS) of Japan + the Republic of Chile.

It's own proposal process



ELT: the Extremely Large Telescope, Chile

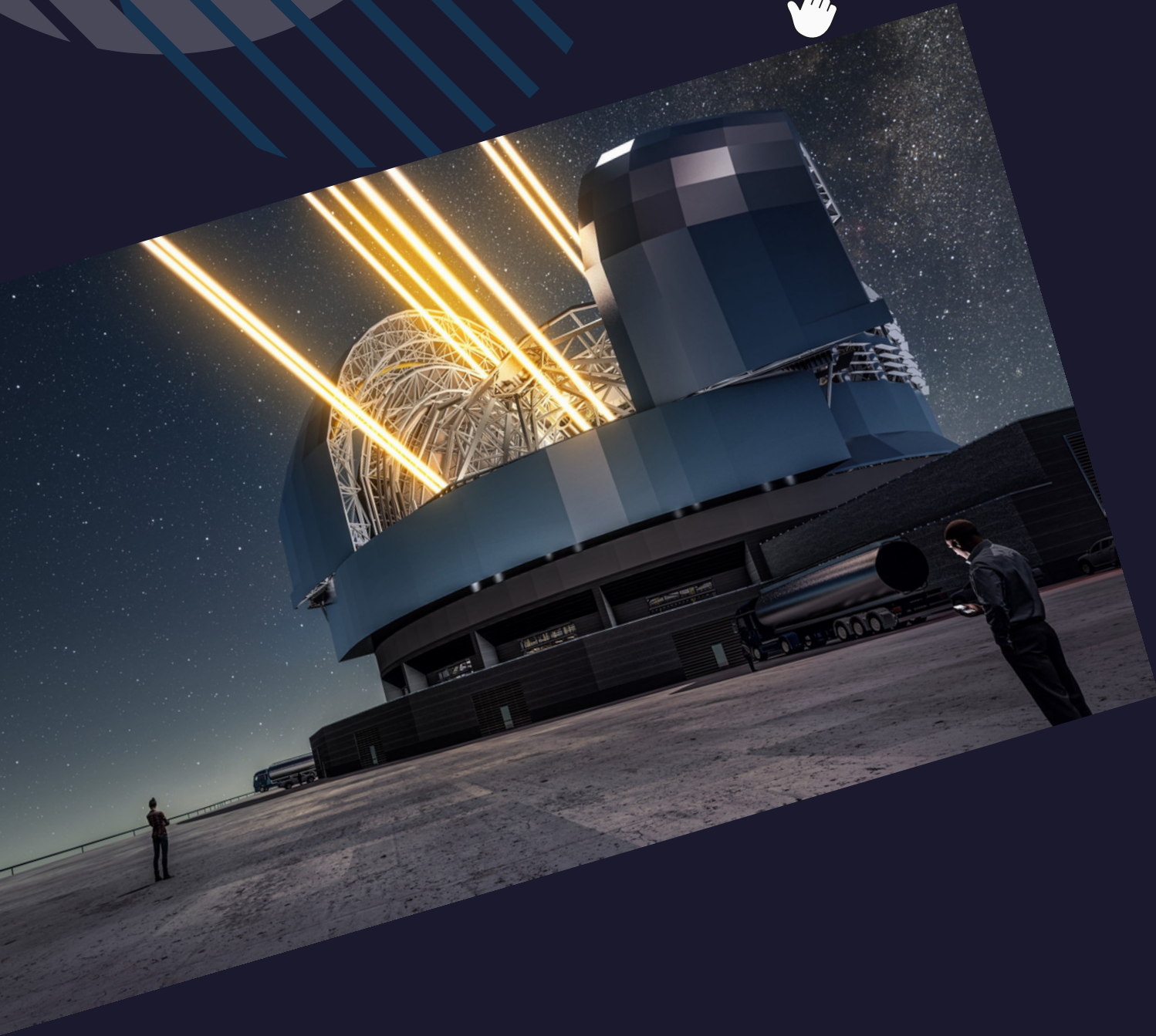
ELT webpage



Main mirror diameter: 39 metres with 798 segments with 20 times more light collecting power than a VLT unit telescope

The first technical light is expected in 2027.

Various working groups to which you can contribute!



Applying for observing time: The proposal process at ESO

CALL FOR PROPOSALS + PHASE 1

Call for proposals

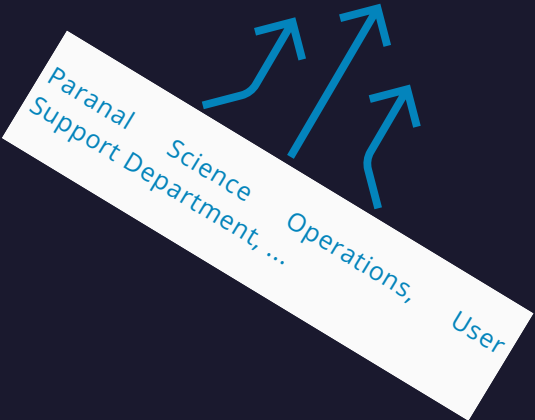


2 x year



P111 call just closed
But ERIS SV and DDT
P110 are open

Proposal preparation:
P1 tool



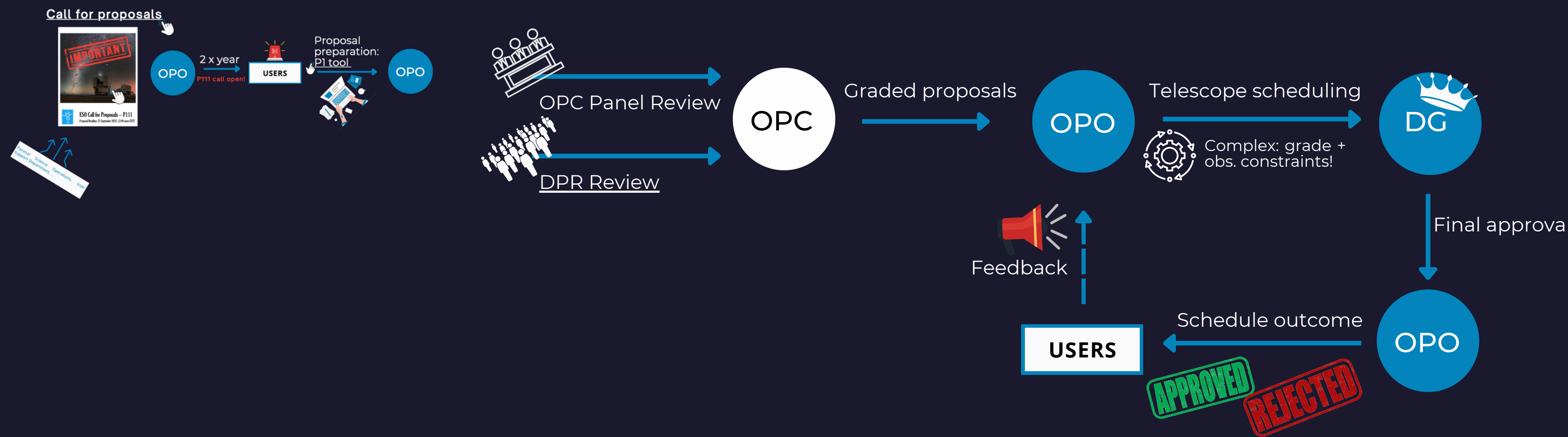
Tereza Jerabkova from OPO



Applying for observing time: The proposal process at ESO

CALL FOR PROPOSALS + PHASE 1

REVIEW PROCESS

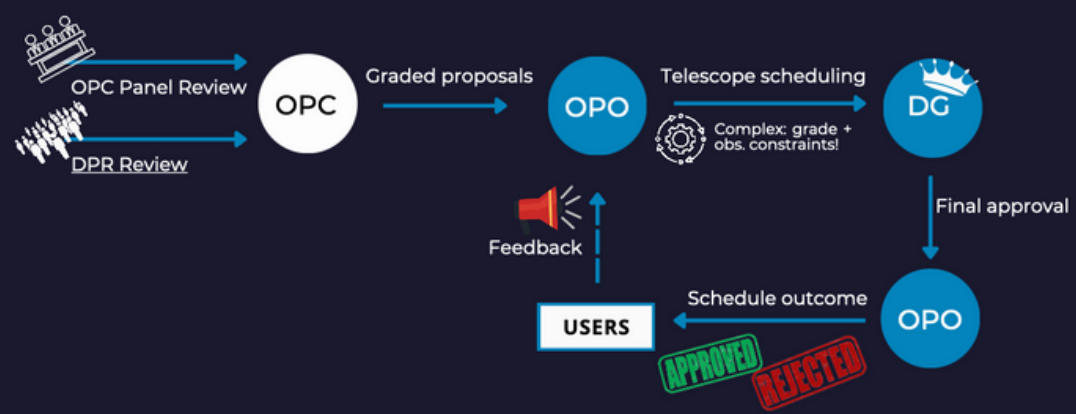


Applying for observing time: The proposal process at ESO

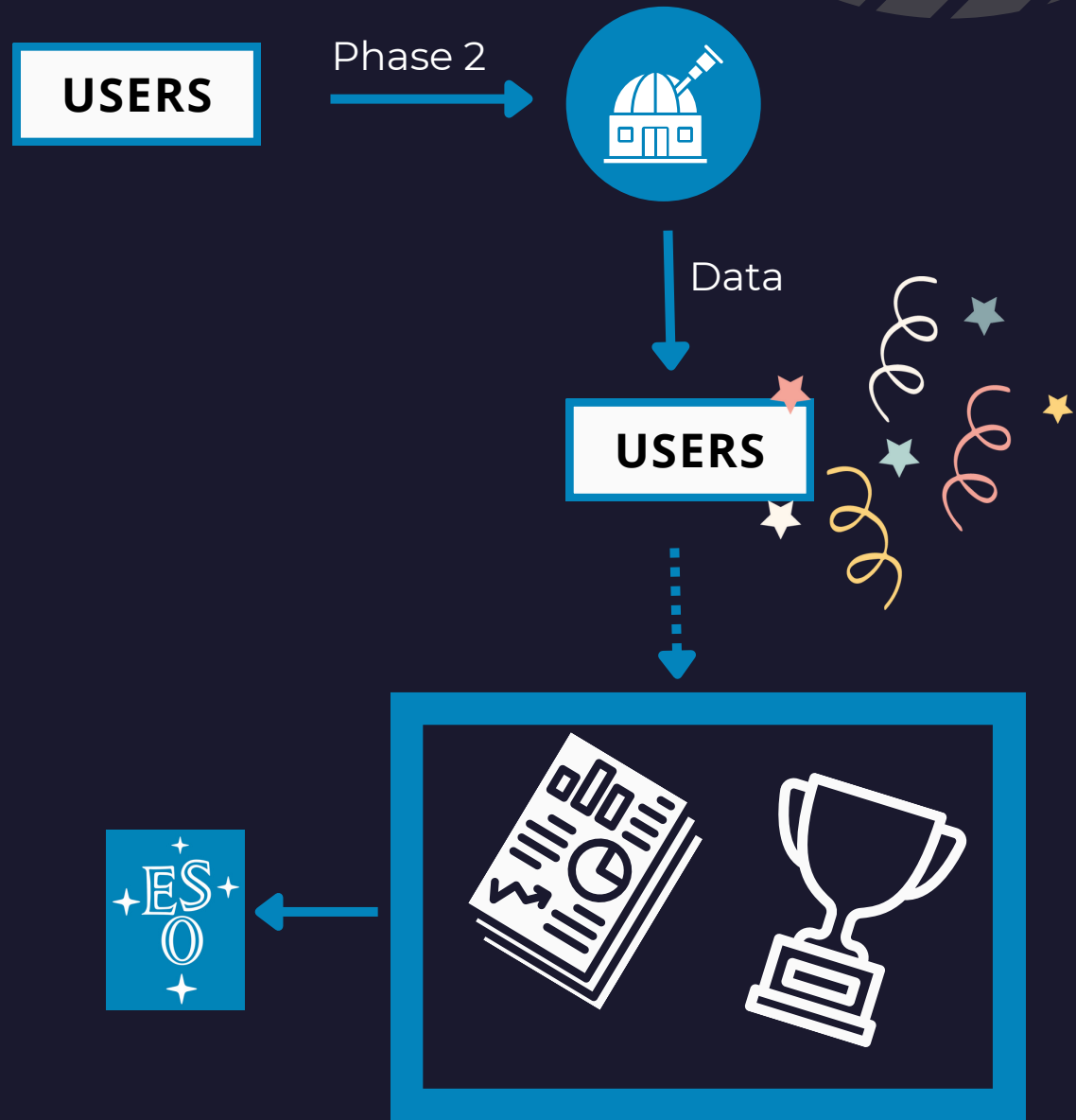
CALL FOR PROPOSALS + PHASE 1



REVIEW PROCESS



PHASE 2 + DATA COLLECTION



ESO FACILITIES & THE PROPOSAL PROCESS

ESO is here for you, the
telescopes are here for you,
we (ESO staff) are here for
you - for the users.

Contact us with any
questions or comments!



Studentship and Fellowship
applications are open!

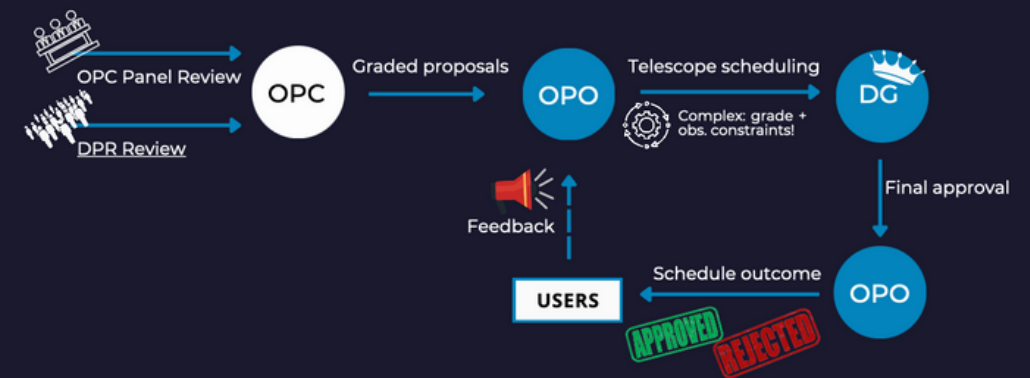
Full PhD programme IMPRS.

ALMA (ESO, AUI/NRAO, NAOJ).

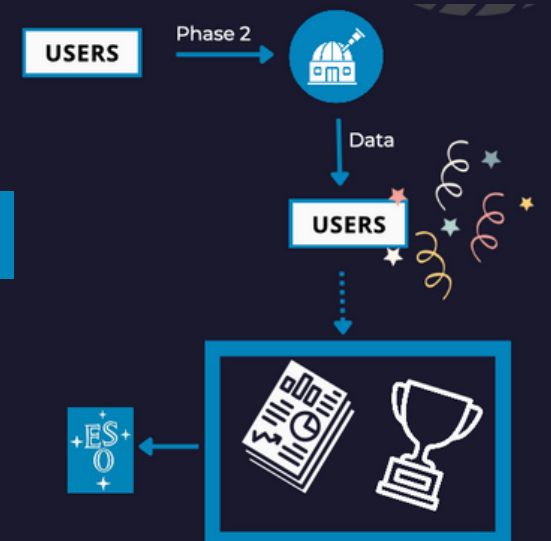
CALL FOR PROPOSALS + PHASE 1



REVIEW PROCESS



PHASE 2 + DATA COLLECTION



Tereza Jerabkova from OPO

